



AUTOMOTIVE PAINTS

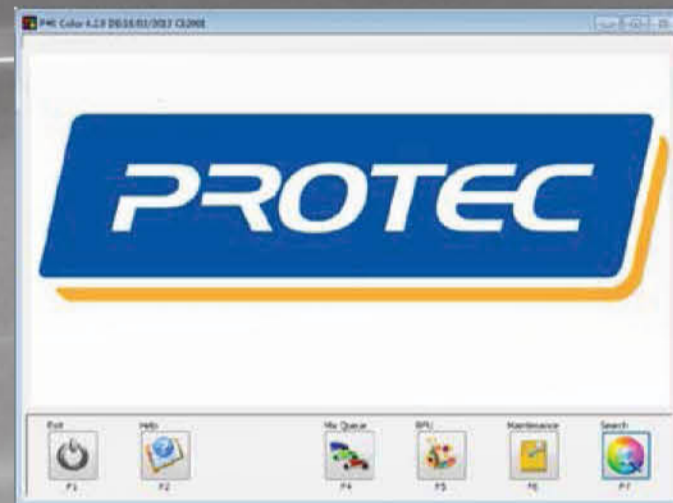
PROTEC Colour Software

STEP BY STEP

Finding and mixing a colour by code.

STEP 1

Click on the Protec Colour icon on your desktop. Then click on 'Search'.



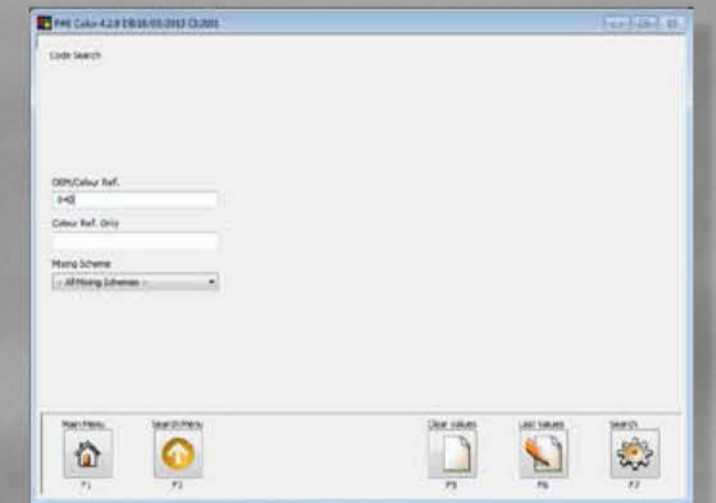
STEP 2

Click on the 'Code' button to search by OEM code. Click on the 'Standard' button for advanced search options.



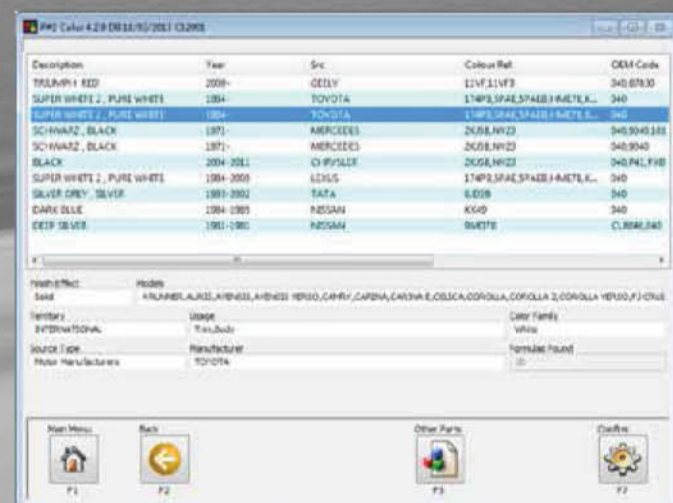
STEP 3

Enter the OEM code. Click 'Search' to start the search.



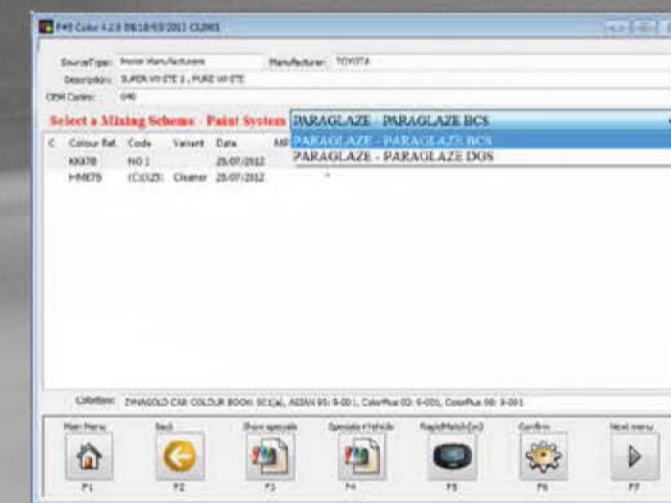
STEP 4

From the results list highlight a colour by clicking on it. In some cases, common codes will display many colours. Extra information about the highlighted colour is shown in the panel below the list. Click 'Confirm' to select the highlighted colour and move to the next screen.



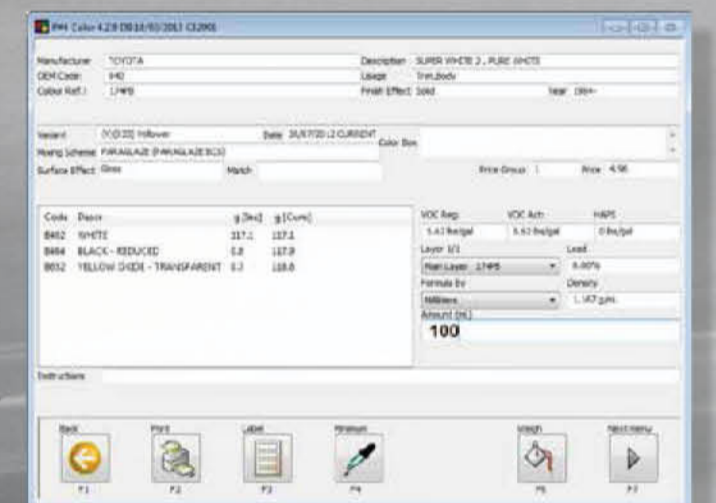
STEP 5

First, select the mixing scheme from the drop-down list. Only mixing schemes that have a match will be displayed. You can then toggle between the variants and specials list by clicking the appropriate button. Highlight the required variant or special and click 'Confirm' to continue.



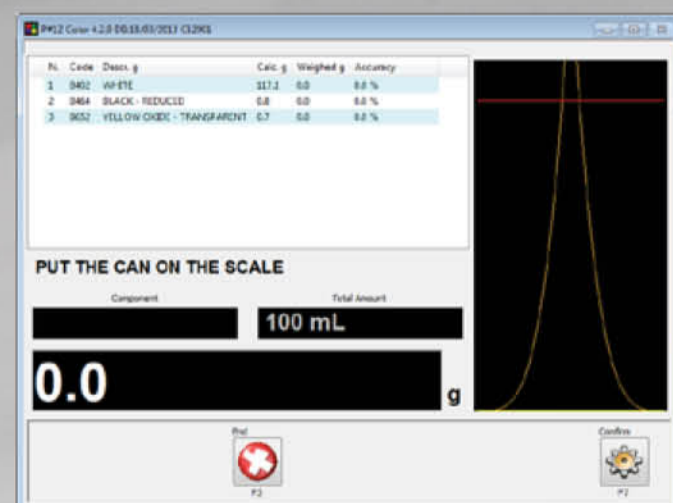
STEP 6

This screen shows the tinters required for the colour. Simply enter the amount of total paint you wish to mix and each component will adjust its volume automatically. Make sure there are no items marked in red as this indicates the amount required is too small to be measured accurately. If this is the case, simply click the 'Minimum' button. Then click on 'Weigh'.



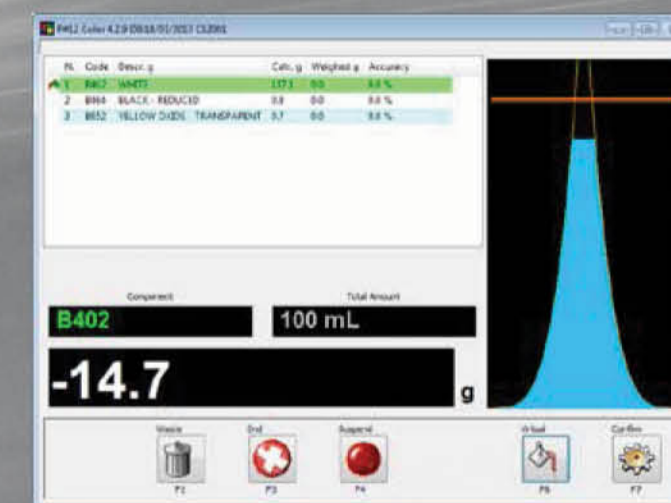
STEP 7

In this screen it shows items to be weighed and the total amount of mixed paint at the end of the process. Place the empty can on the balance and click 'Confirm' to start the weighing process.



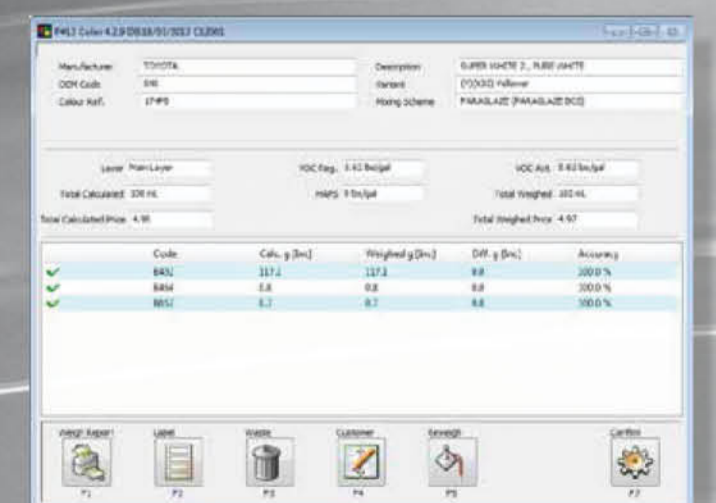
STEP 8

Pour the indicated tinters to the required amount and click 'Confirm' to move to the next ingredient. Click 'Confirm' to finish the weighing process after the last tinter has been added.



STEP 9

When weighing has been completed, the weigh summary screen is displayed. Clicking 'Confirm' on this screen gives you the option to RFU or return to the main menu.



Protec Pty Ltd
Aus. Tel 1800 076 466
N.Z. Tel 0800 436 7832
www.protec.com.au

All information on this poster is correct at the time of printing and is subject to change. Please contact Protec for any queries you may have.

